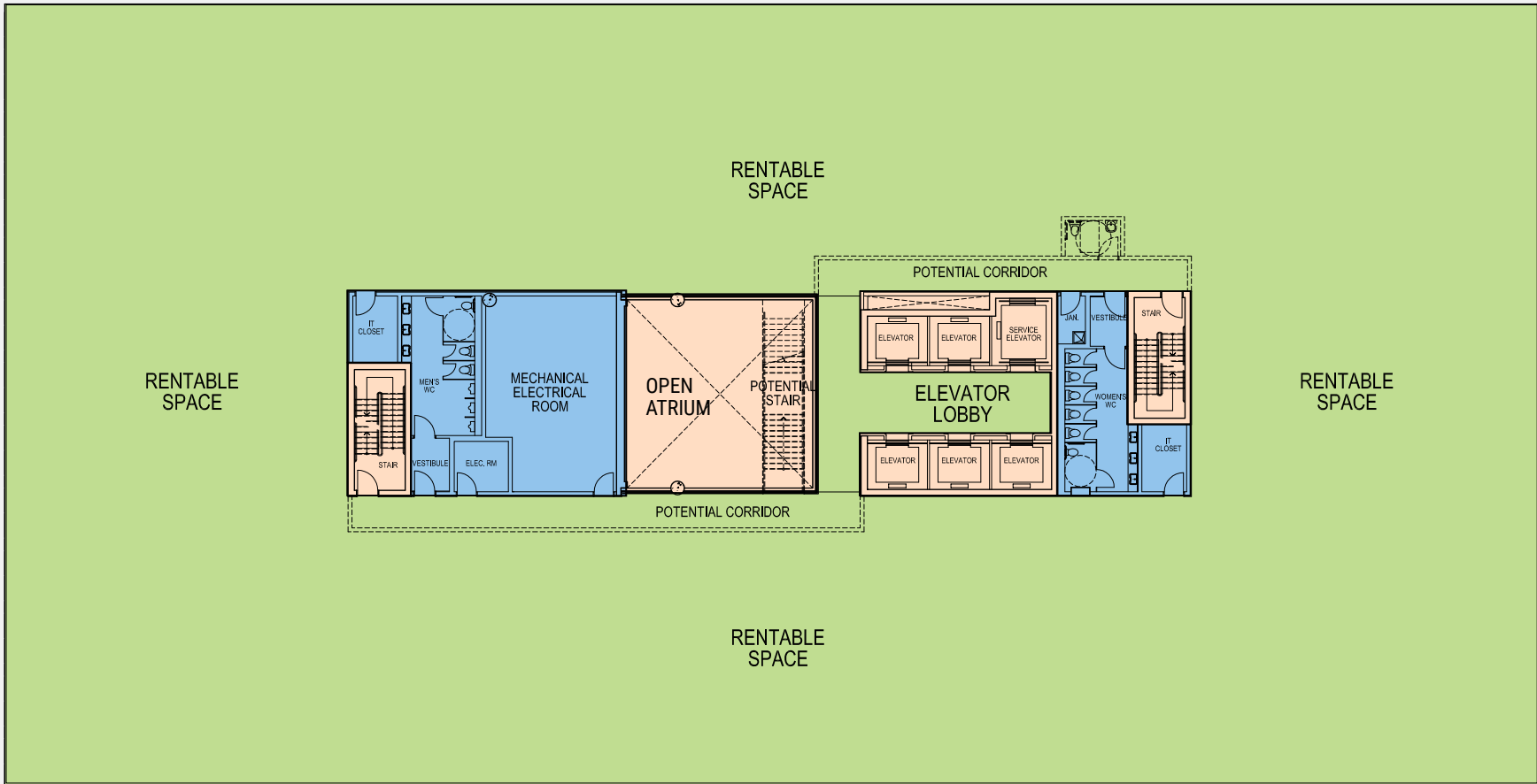




MILESTONE CORPORATE CAMPUS

NOW LEASING

milestonecampus.ca | 905-418-4188



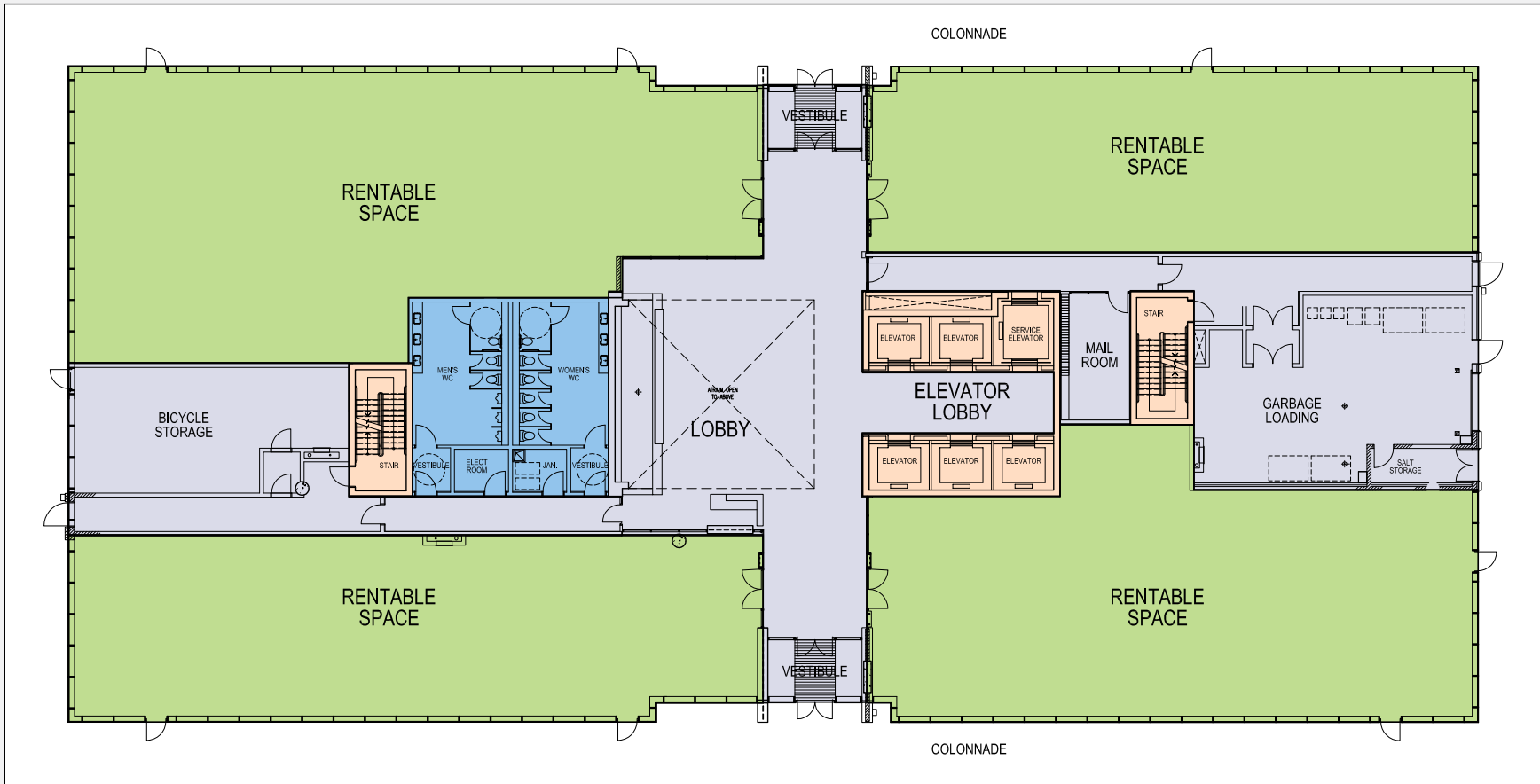
Phase Two - Floors 2-8



MILESTONE CORPORATE CAMPUS

NOW LEASING

milestonecampus.ca | 905-418-4188



Phase Two - Ground Floor



MILESTONE CORPORATE CAMPUS

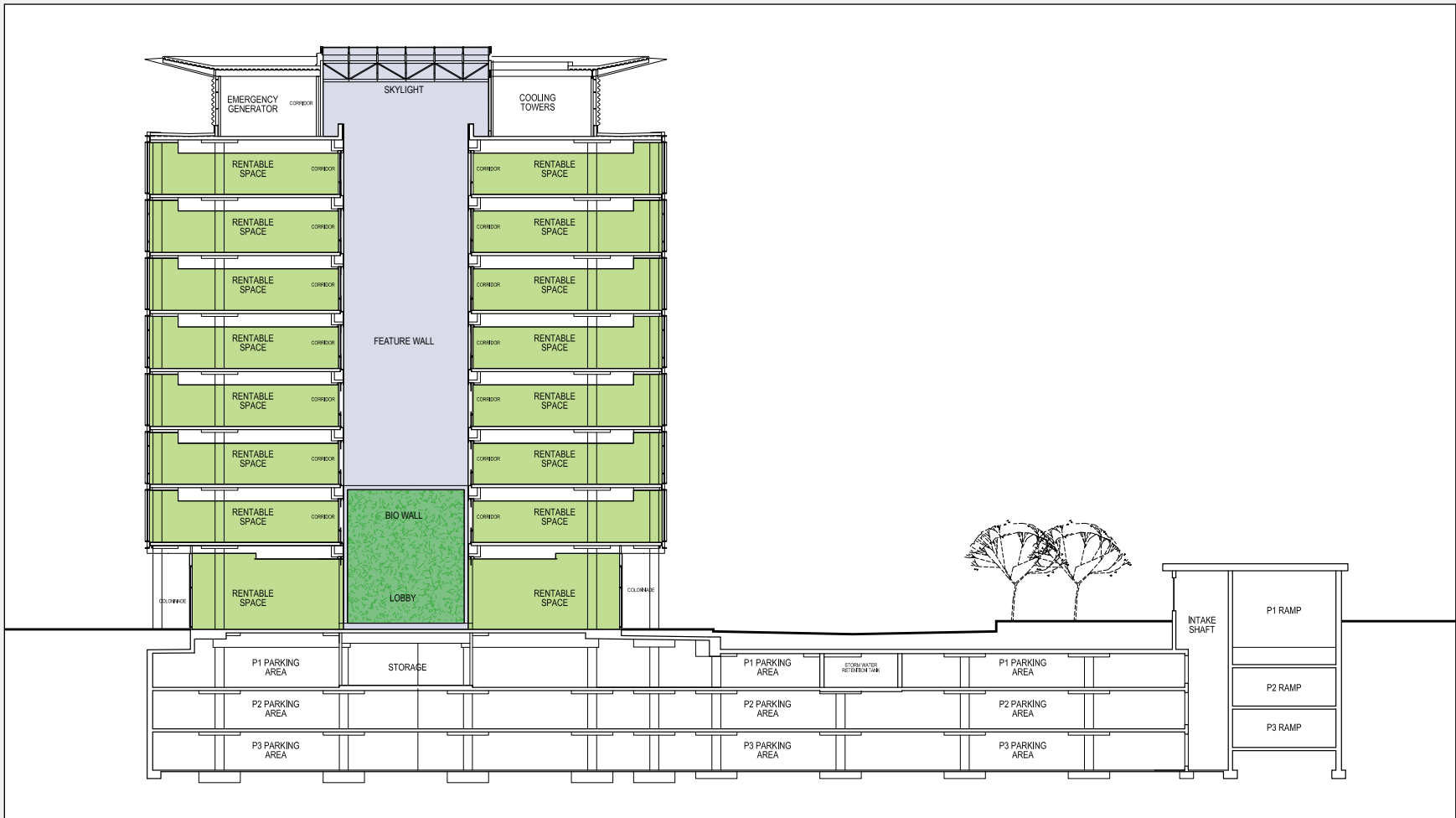
NOW LEASING

milestonecampus.ca | 905-418-4188



milestone group

CUSHMAN &
WAKEFIELD



Phase Two - Section